






# MILLINGTON TUNNICLIFF

[www.millingtontunncliff.co.uk](http://www.millingtontunncliff.co.uk)

## 11 Lower Brook Park,

Guide Price £560,000

 4  2  2



A spacious 4 double bedroom detached house sitting on a corner plot within this highly sought after cul de sac. The house has an entrance porch, hallway, cloakroom, living room, dining room, conservatory, kitchen and utility on the ground floor, together with a feature gallery style landing, the 4 bedrooms, en suite shower and family bathroom on the upper floor. The property is Upvc double glazed, gas centrally heated and has a feature Minster fireplace. The gardens are mainly level and established with mature willow tree, double width drive and the double garage. EPC D 68.

01752 896020 | [info@millingtontunncliff.co.uk](mailto:info@millingtontunncliff.co.uk) | 19 Fore Street, Ivybridge, Devon, PL21 9AB

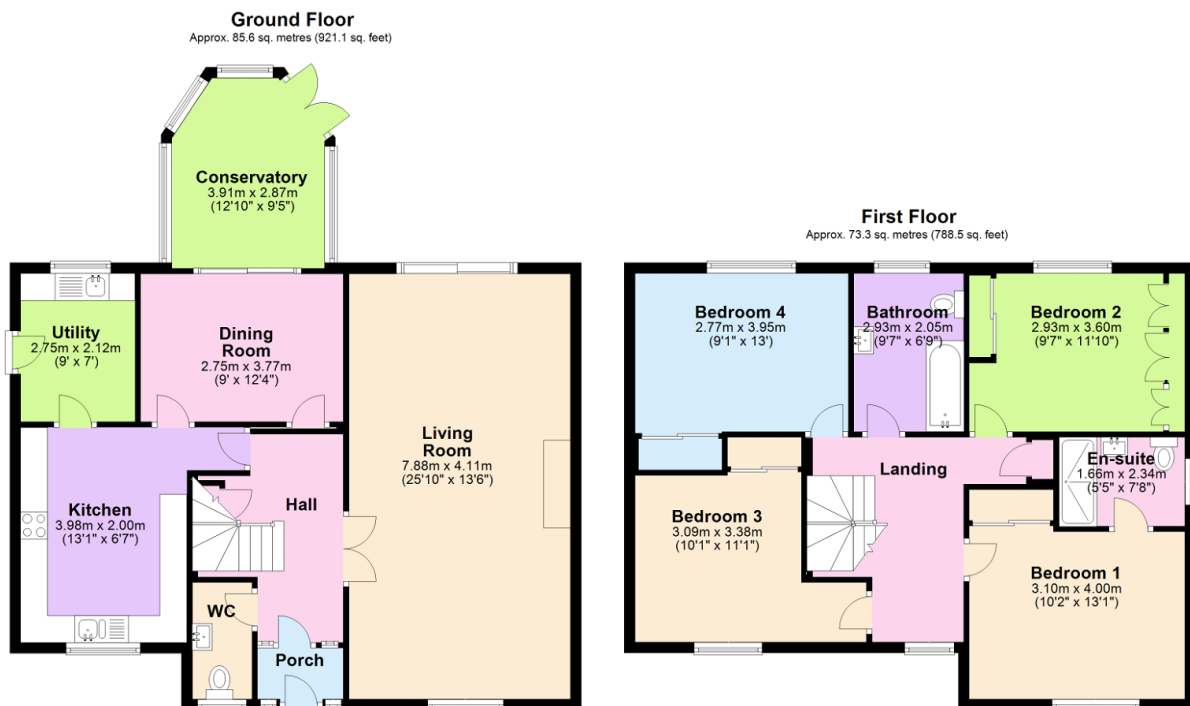


# MILLINGTON TUNNICLIFF

[www.millingtontunnickliff.co.uk](http://www.millingtontunnickliff.co.uk)

## Key Features

- 4 Double Bedroom Detached House
- 2 Reception Rooms
- Utility Room
- Upvc Conservatory
- Double Width Drive And Double Garage
- Mainly Level Established Corner Plot
- Integrated Modern Kitchen
- Modernised 3 Piece En Suite Shower Room
- Upvc Double Glazing
- Gas Central Heating



Total area: approx. 158.8 sq. metres (1709.6 sq. feet)

01752 896020 | [info@millingtontunnickliff.co.uk](mailto:info@millingtontunnickliff.co.uk) | 19 Fore Street, Ivybridge, Devon, PL21 9AB